



JULY 2023

Official Newsletter of the Town of Millsboro

Thank You to all who serve
and have served

Thank you for your sacrifices, for
your valor, for the things you
carry, for protecting us, and for
defending our rights.

Thank You for your courage,
strength and dedication to
keeping us safe.

FYI!



ONLINE BILL PAY

Town Property Tax:

Town Water Bills:

Town Sewer Bills:



(or [Click Here](#))

TOWN COUNCIL

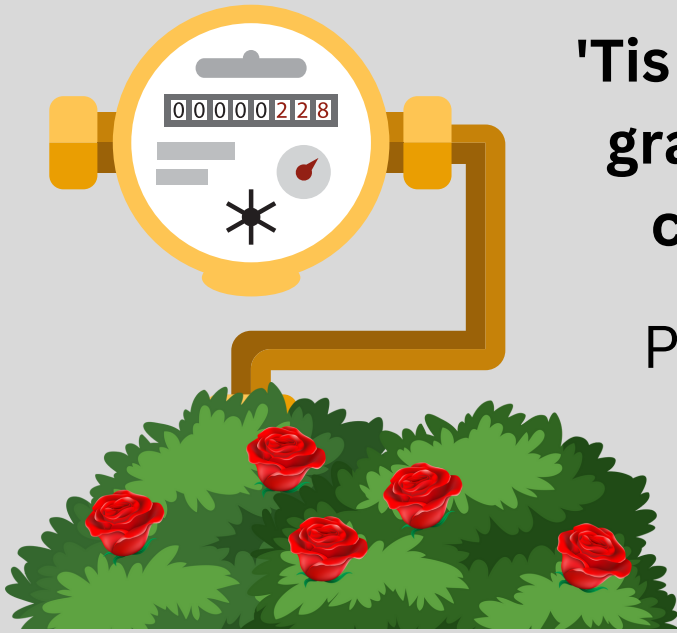
Town Council meets the first Monday of each month (Tuesday if the Monday falls on a holiday). This is a public meeting.



DOG PARK

The Town of Millsboro has a public, no membership, no cost dog park! The park is located on Wilson Highway. Please enjoy your time and pick up after your pup!





'Tis the season for plush green grass, beautiful flowers, and covered watered meters.

Please make sure your water meters are accessible and visible to be read by our Public Works staff.

Are you conducting business in Town or having business conducted at your home or business within the municipal limits of Millsboro?

**APPLY
ONLINE!**



[\(or Click Here\)](#)

To avoid penalties and fees please ensure a business and/or rental license is obtained.

The Town of Millsboro presents

CONCERTS IN THE PARK!

CUPOLA PARK

TUESDAYS, 7 - 9PM

June 6th- Overtime Band

June 13th- Blind Wind

June 20th- Jones Boys

July 11th- Alan Kessel

July 18th- Glass Onion

August 1st- Reunion Band

August 15th- Hot Sauce Band

August 29th- Southbound of DE



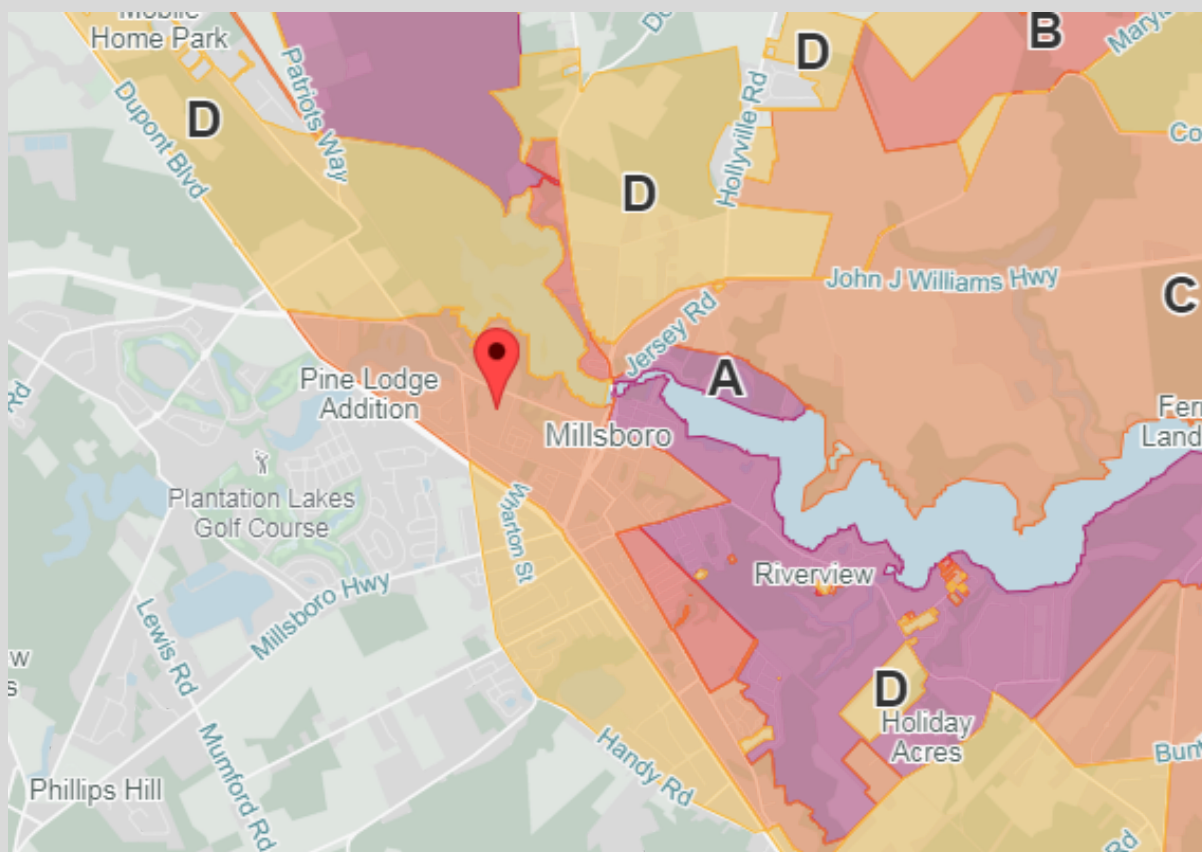
**BRING
A
CHAIR!**

Know Your Zone

**The Atlantic Hurricane season extends from
June 1st through November 30th**

It's important to know your Evacuation Zone before a disaster strikes. Your zone includes specific evacuation routes for your area and proper guidance in the event of an emergency. Evacuating in a planned method by zone reduces unnecessary evacuation travel, roadway congestion and overcrowding, and allows for quicker, safer movement for everyone at risk during emergencies and disasters. Familiarizing yourself with your zone in advance provides time-saving opportunities for planning and preparation for you, your family and those closest to you.

During an emergency event, Delaware State officials use the letter associated with the affected Evacuation Zone(s) when issuing an evacuation warning or order. Keep your specific Evacuation Zone information (A, B, C or D) in an easy to reach place, such as on your refrigerator or with other emergency information.



<https://preparedede.org/know-your-zone/#zonefinder>

Commend an Officer

We, here at the Town of Millsboro, feel very fortunate to have what we believe is a wonderful police force with great leadership. Did you have a positive experience or witness one of our officers do something you would like to recognize them for?

Tell us about it here by scanning this QR code:



[\(or Click Here\)](#)



Millsboro's Main Street
from Millsboro Trust Co.

Did you know?!

Elisha Dickerson's large grist mill and saw mill were only two of the more than fifteen grist and saw mills which existed within a four-mile radius of Millsboro in the Early 19th Century. Originally,

however, the name "Millsborough" applied only to the area on the northeastern side of the river where Dickerson's grist mill was located, and it only got this name in 1809 when residents adopted it as an alternative to the earlier "Rock Hole Mills". The growing community on the southwestern side of the river was known as "Washington" until 1837 when the two villages became a single community under the name Millsborough, later shortened to Millsboro.



As the weather warms, many people pull out their bicycles to enjoy the season. It's a great way to take care of your health and see the sights at the same time. Unfortunately, while bicycles make up only 1% of trips in the United States according to the CDC, bicyclists account for 2% of fatalities involving a motor vehicle.

Nearly 1,000 bicyclists are killed and over 130,000 are injured on the roads each year. And though most ER trips are made by children and young adults, the highest rate of death of bicyclists is actually adults between 5-69 years of age. While 27% of bicyclist deaths occur at intersections, about 64% occur on stretches of road with no intersections where higher speeds may occur.

There are things bicyclists can do that will help them be safer, however. If you're riding in an area without designated bike lanes, ride on the right side of the road. The rule of thumb is the right side is the right side to ride. You should be riding with traffic, not against it. If you're approaching a lefthand turn, signal as early as possible, carefully move to the left side of your lane when it's safe to do so and double-check before turning.

Safety Tips for Bicyclists

- 1-** Wear a helmet, whether it's the law in your area or not. In Maryland, you must wear a helmet while riding a bicycle if you're under the age of 16. In Delaware, you must wear a helmet if you're under the age of 18. Helmets can reduce the risk of head injury in a crash by more than 50% and may prevent head injury-related deaths by as much as 60%. And just as importantly, make sure the helmet is properly fitted so it can protect you and your loved ones.
- 2-** Wear gear that makes you more visible while riding, especially in the evening, at night, or on overcast days. Whether it's reflective clothing or vests or fluorescent clothing, brighter clothing makes you more eye-catching to motorists.
- 3-** Equip your bicycle with lights to ensure you're seen, especially if you ride during times when you may be more difficult to see such as poor weather, or early or late in the day. A headlight in the front is recommended, and a rear light if you'll be biking at night.
- 4-** Know the laws for your state. Often states have different laws for cyclists, so make sure you research bike safety for the state you're riding in, especially if you're riding in an unfamiliar state.
- 5-** Remember that you are still subject to the same laws as drivers. You must obey traffic signs and lights. Do not ride while under the influence of drugs or alcohol.

There are also safety measures drivers must take when sharing the roads with cyclists. You must give bicyclists a minimum of three feet of clearance when driving alongside them or passing them. When you're turning beside a bicyclist in the bike lane, allow them to complete their turn first before turning behind them. And if you're sharing the road with them in the early morning, evening, night, or any time with low visibility, avoid using your high beams. Pass bicyclists as you would a motor vehicle- wait until it is safe to do so and allow plenty of room for you and the cyclist. Before completing a right turn, check behind you and to your right to ensure you don't have a cyclist in the vicinity.

Whether you're a bicyclist or a motorist, if we all work together we can help keep each other safe. Be aware of your surroundings, and stay safe while enjoying this lovely weather.

(Source: Beacon 3883)

Town of Millsboro

Town Hall

322 Wilson Highway
Millsboro, DE. 19966

Phone: (302) 934-8171

www.millsboro.org

**Do you have any questions and/or need
to meet with Town Staff?**

Contact Us!

town@millsboro.org



Police Department

307 Main St #8413

Millsboro, DE 19966

Phone: (302) 934-8174 (non-emergency)

Please dial 911 for emergencies

www.millsboropd.com